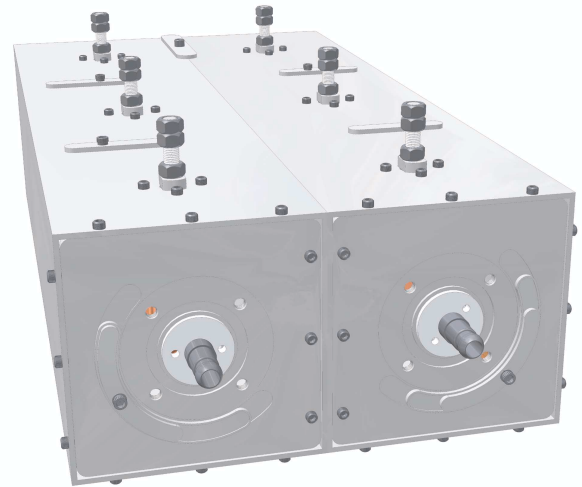


The Low Power UHF Solution

1.5 kW Mercury

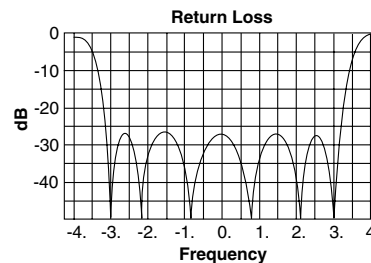
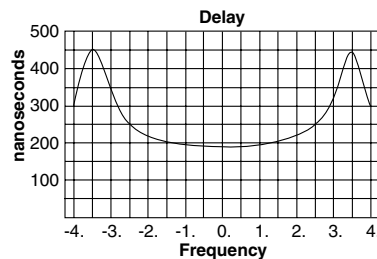
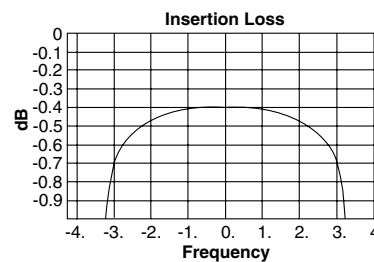
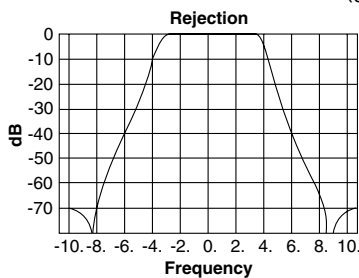
- Coaxial I/O's as specified
- Evanescent mode design for lower loss
- Rejection requirements as specified, mild or sharp tuned utilizing cross coupling technology
- 19" rack mount mask filter for DTV, DVB, and analog applications
- Light weight aluminum construction
- Temperature compensated



Dimensions: 12 1/2" X 10" X 28"

Let MYAT design a solution for you

Typical performance
(6 section, mild tuned)



You Can Depend On MYAT

If you believe, as we do, that results are worth far more than empty promises, please give us a call at 201-767-5380. Or visit our Web site: www.myat.com. We'll get you on air, on time and on budget with reliable solutions that keep you up and running.

Efficient filter solutions that save you time and money.



380 Chestnut Street
P.O. Box 425
Norwood, NJ 07648
phone: 201-767-5380
fax: 201-767-4147

Mercury Filter