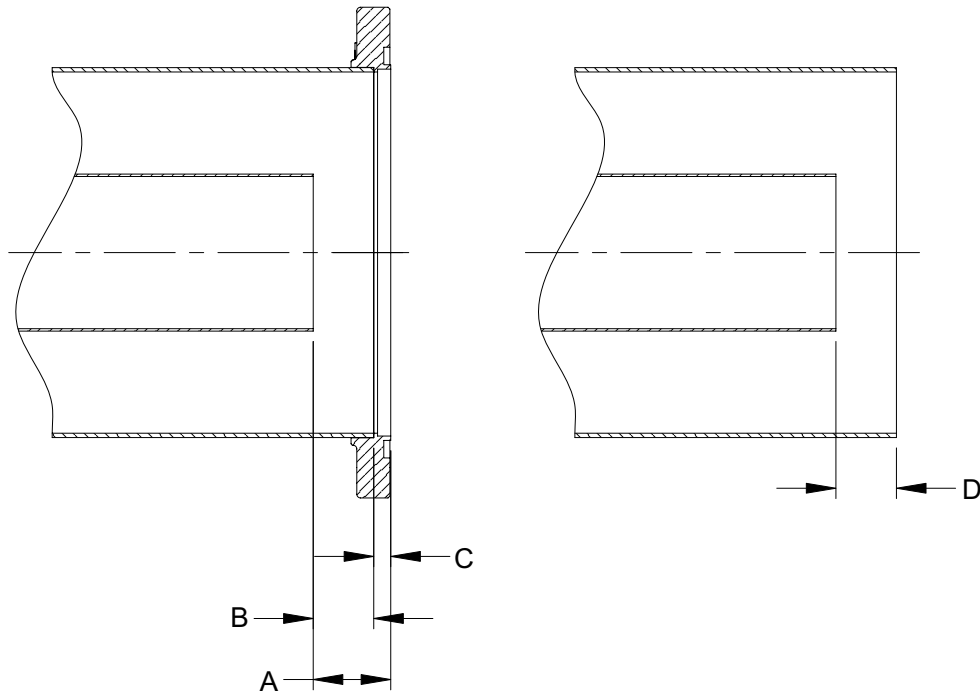
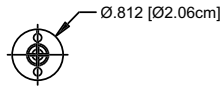
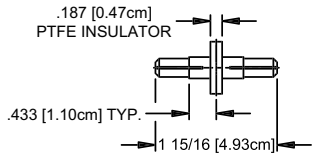


Cut-Back Dimensions Copper Or Aluminum Rigid Line

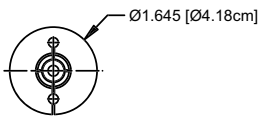
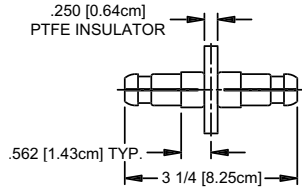
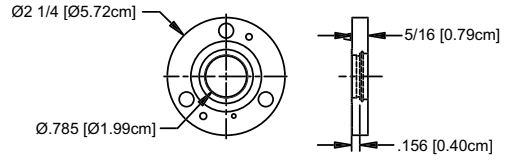


NOMINAL LINE SIZE		7/8	1 5/8	3 1/8	4 1/16	6 1/8	7 3/16	8 3/16	9 3/16
CUT-BACK	A	.500 [1.27cm]	.625 [1.59cm]	1.015 [2.58cm]	1.375 [3.49cm]	1.343 [3.41cm]	1.410 [3.58cm]	1.664 [4.23cm]	1.687 [4.28cm]
	B	.344 [.87cm]	.438 [1.11cm]	.765 [1.94cm]	1.125 [2.86cm]	1.062 [2.70cm]	1.060 [2.69cm]	1.164 [2.96cm]	1.062 [2.70cm]
	C	.156 [.40cm]	.187 [.47cm]	.250 [.64cm]	.250 [.64cm]	.28 [.71cm]	.350 [.89cm]	.500 [1.27cm]	.625 [1.59cm]
	D	.344 [.87cm]	.438 [1.11cm]	.765 [1.94cm]	1.125 [2.86cm]	1.063 [2.70cm]	_____	_____	_____

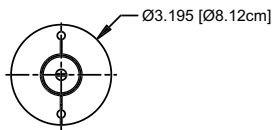
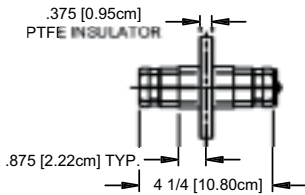
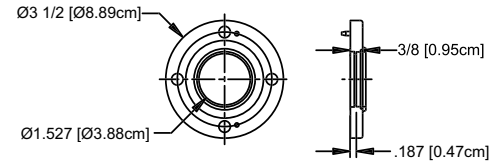
Connectors & Flanges



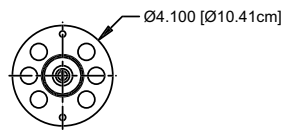
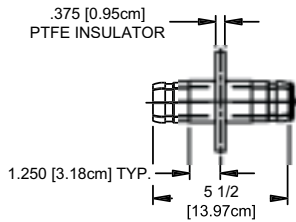
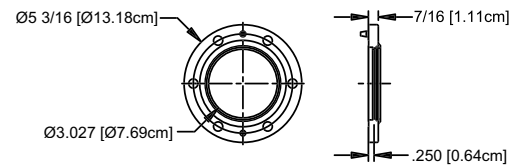
7/8, 50 Ω



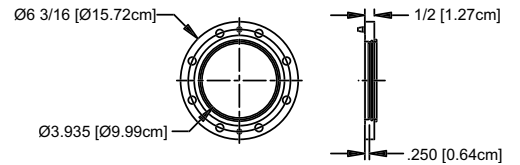
1 5/8, 50 Ω



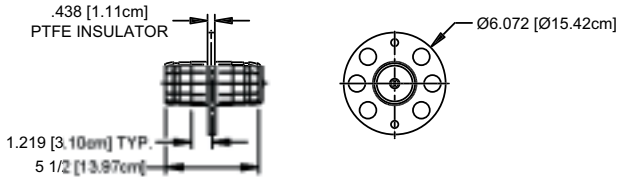
3 1/8, 50 Ω



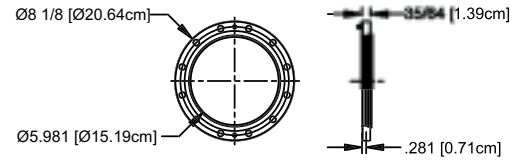
4 1/16, 50 Ω



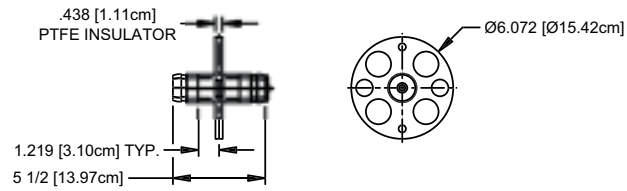
Connectors & Flanges



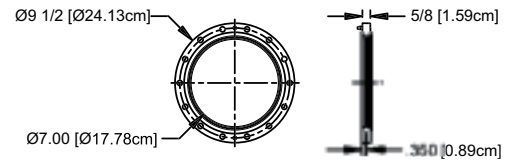
6 1/8, 50 Ω



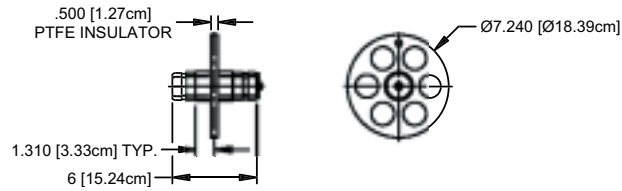
6 1/8, 75 Ω



7 3/16, 75 Ω



8 3/16, 50 Ω



9 3/16, 50 Ω

